

## U.S. Pat. 5,812,669



text (trkst) n.  
1. The original words of something written or printed, as opposed to a paraphrase, translation, revision, or condensation. b. The words of a speech appearing in print.  
2. The body of a printed work as distinct from headings and illustrative material. b. The body of a speech appearing in print.  
3. One of the editions or forms of a written work. After examining all three manuscripts, he purchased a new text of the poem.  
4. A passage from the Scriptures or another authoritative source chosen for the subject of a discourse or cited for support in argument.  
5. A passage from a written work used as the starting point of a discussion.  
6. A subject; a topic.  
7. A textbook.  
[Middle English texte, from Old French, from Late Latin, written account; from Latin, structure, context; body of a passage; from past participle of texere, to weave; fabricate. See teks below.]

# TEMPLAR 5 SOFTWARE

## TRANSLATE. SECURE. TRANSMIT

## Unparalleled Features And Ease Of Use

### Key features at a glance.

**Trading Partner Management**—T5 tracks all aspects of your trading community's information. T5 handles every aspect of data transport for anyone to whom you need to move data securely and efficiently.

**Trading Partner Agreements**—With the ability to mandate security standards for each of those you trade data with, you can ensure that you are trading the data the way you want to or the way you are being requested to. T5 utilizes every major Algorithm, MIME, signature and receipt. Use these in any combination you choose with your trading partner.

**Certificate Management**—T5 has the ability to create PKI self signed certificates and requests for Certificate Authority signed certificates.

**Translation**—T5 now has the ability to translate any data format to any other data format. This includes EDI, XML, Flat Files, Excel Docs, Etc.. Easily integrates into current network configuration.

**Ad-Hoc Trading**—With Ad-Hoc trading, you can send ANY flat file exactly as it appeared before it left. Ad-hoc lets you send any data type to anyone utilizing x. 12 headers (never seen by you) for correct routing.

**Automated Data Pickup**—T5 is an out of the box automation tool. T5 has the ability to pickup a file from anywhere on your network and place incoming data anywhere on your network—all automatically and without writing scripts.

**Logging**—T5 tracks every movement in the system right down to the protocol transmission logs to prove your data has arrived.

**Parallel Tasking**—All T5 transport protocols can be run in multiple instances to utilize the full resources of your machine.

**Define XML Definitions**—Your XML, Your Way! T5 holds true to the standards of EBXML and CXML however, it allows you to utilize your own standard. Create your XML documents, tell T5 where to look for key bits of information required for transmitting it and T5 will support your schema. T5 not only meets the standards, it surpasses them.

### KEY TECHNOLOGIES:

T5 employs core technologies to make it one of the most robust cost-effective EDI/INT and XML solutions on the market.

**Encryption Algorithms**—T5 has a variety of encryption algorithms including DES, Triple DES/DESEDE3, Rijndael-256, Blowfish, GOST, MARS, RC4, RC2, CAST 128, Serpent, Two Fish and IDEA.

**Transmission Protocols**—T5 supports a variety of transmission protocols including FTP, SFTP, SMTP, TCP/IP, TCP/IP with SSL, HTTP(S), Direct File Transfer, Send Mail, POP3, POP3 with SSL.

**Data Translation and Data Mapping**—Templar software separates the mapping functionality from the production data translation engine. This unique feature allows for lightning fast translation, while splitting out the development and testing of all data maps.

### VERSIONS/REQUIREMENTS:

**T5 Enterprise**—Designed for the company that needs to trade data with a lot of trading partners. Can be run as a service in Windows and can connect to third-party databases.

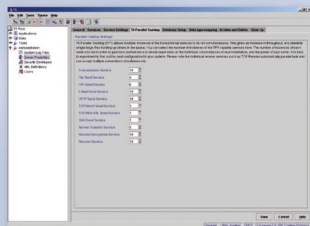
**T5 Desktop**—Designed for the company who needs to trade data with only a few trading partners. It is an integrated client and server application but doesn't allow other clients to connect to it.

#### Requirements:

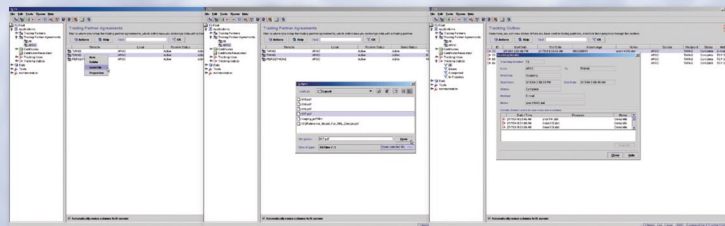
Any Java 1.3 compliant operating system  
Minimum 512mb RAM  
Minimum 8gb HD space  
Minimum 833 mhz processor

## SNAPSHOTS

Select the **Server Properties** Node from the **Administration Branch**. Click on the **T5 Parallel Tasking Tab**. Simply increase or decrease the number of instances for each service.



To send an ad-hoc flat file, right click on the **Trading Partner Agreement** and select the **Send File Option**. After you have selected a file from your hard drive, click the Open Button to send it via T5.



T5 features a number of transport protocols. To select a transport protocol for your **Trading Partner Agreement**, simply select it from the dropdown menu. No extra modules are required

